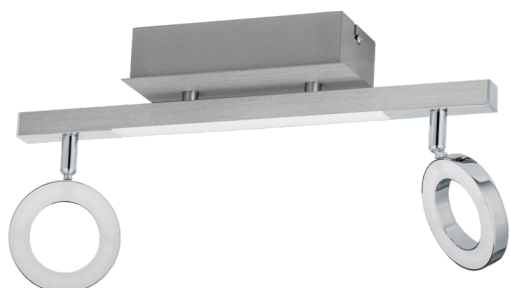


96179

CARDILLIO 1



General Information

Material number	96179
Type	spot
Product segment	Indoor
Theme	sonstige / nicht zuordenbar
Energy efficiency class (EEI)	E

Dimensions

Article Height (in mm/in)	195
Article Width (in mm/in)	85
Article Length (in mm/in)	385
Net Weight (in kg)	0.64

Material & Colour

Enclosure Material	aluminium, steel
Enclosure Colour	aluminium, chrome
Glass/Shade Material	plastic
Glass/Shade Colour	satın finish

Functionality

Switch Type	without switch
-------------	----------------

Battery	No
---------	----

Technical Information

Protection Degree	IP20
Protection Class	2
Mains Voltage	220-240V,50/60Hz
Dimmable	No
Watt 1	3,2
Watt 2	3,3
Max.Watt incl.transformer/driver	11W

Illuminant 1

Number of Lamp socket / Light source 1	2
Lamp socket 1	LED
Illuminant type 1	LED
Illuminant 1	Inclusive
Lumen each Lamp socket / Light source 1	440
Kelvin 1	3000
Light colour 1	WARM WHITE
Energy efficiency class (EEL)	E
Dimmable	No
Info changeability light source/driver	LED + driver can be exchanged by a specialist

Illuminant 2

Lamp socket 2	LED
Illuminant type 2	LED
Illuminant 2	Inclusive
Lumen each Lamp socket / Light source 2	400
Kelvin 1	3000
Light colour 1	WARM WHITE
Energy efficiency class (EEL)	E
Dimmable	No
Info changeability light source/driver	LED + driver can be exchanged by a specialist



Technical changes reserved

2/2



Contact | Support
eglo.com/en/eglo-worldwide